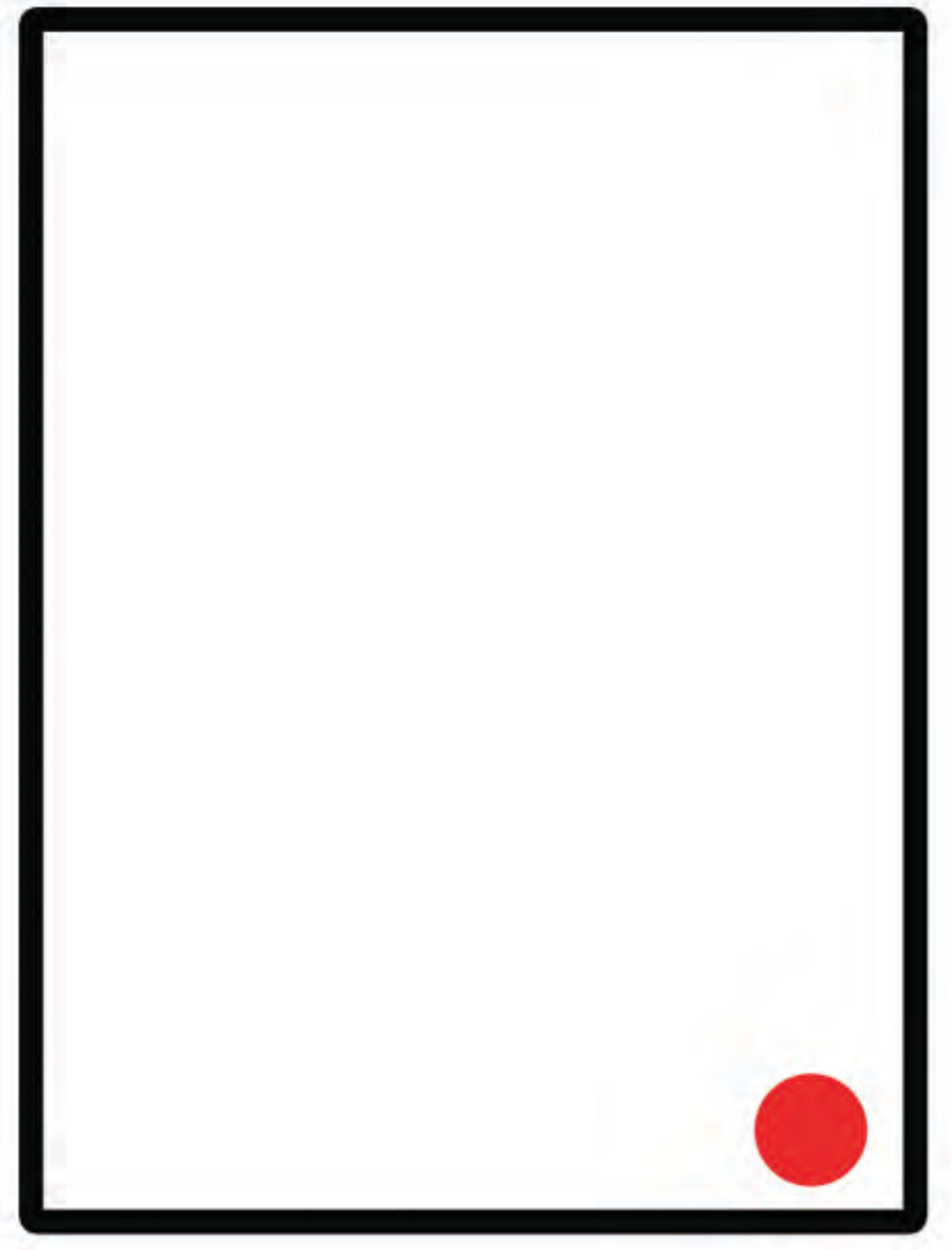
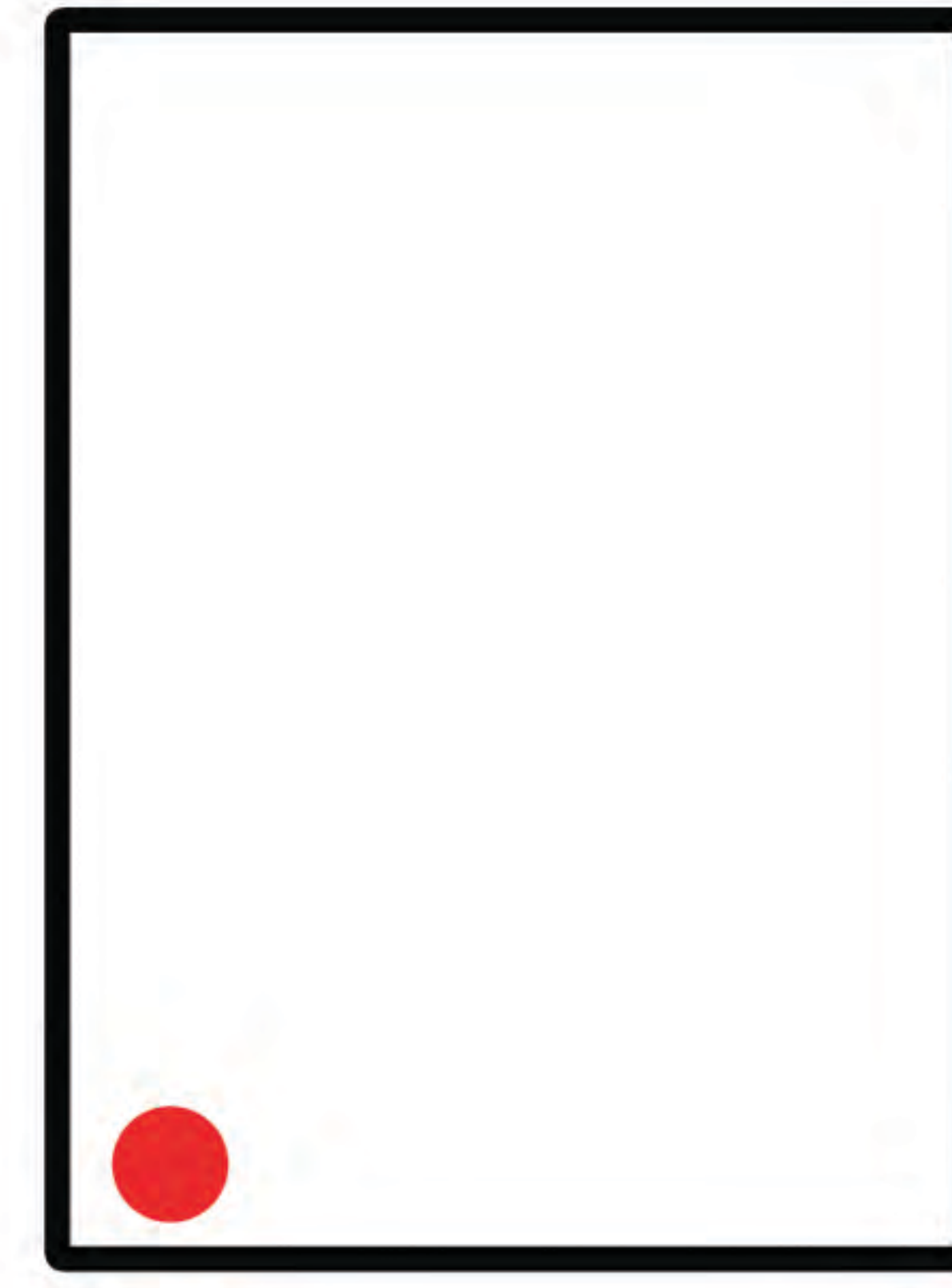
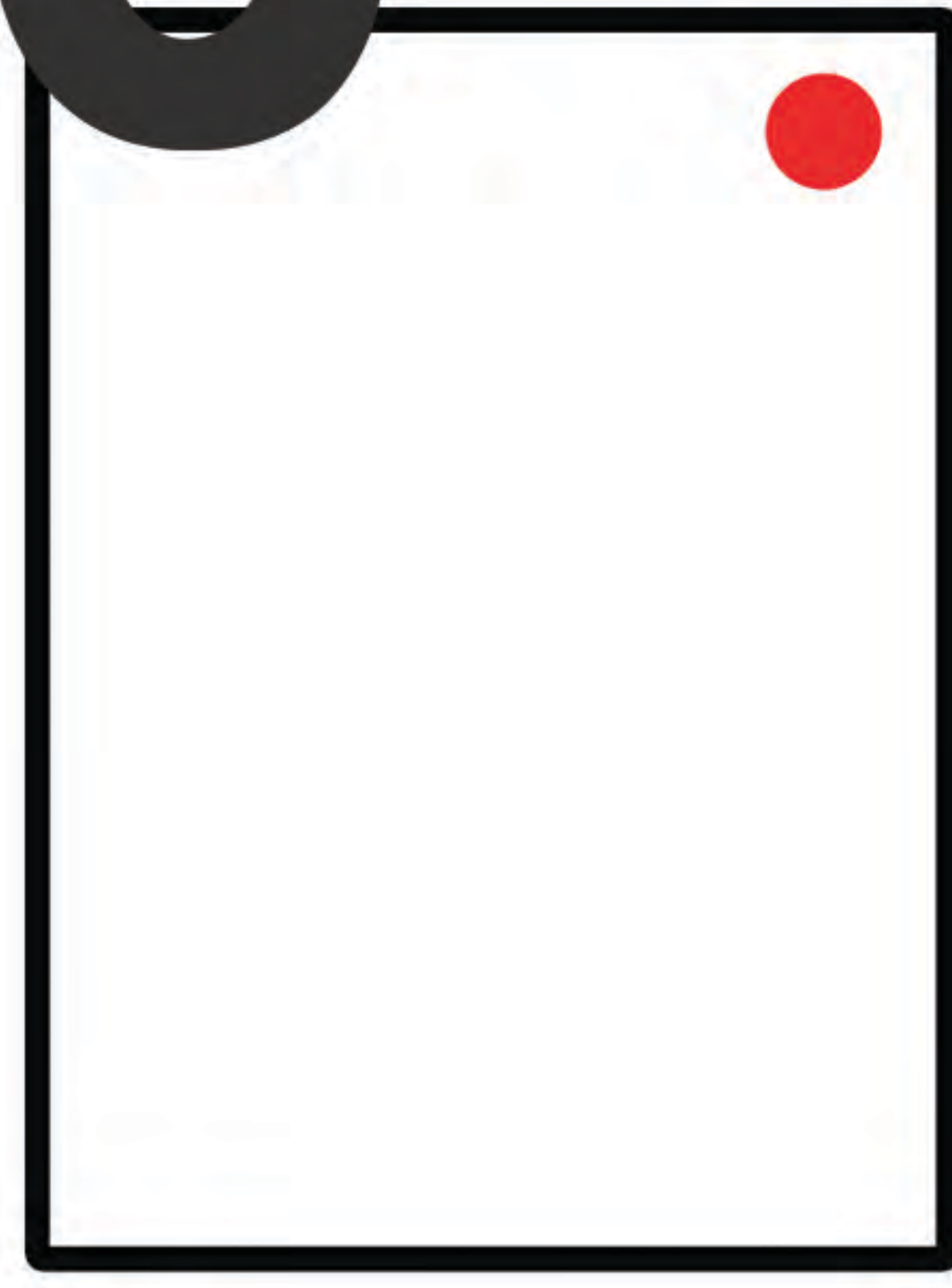
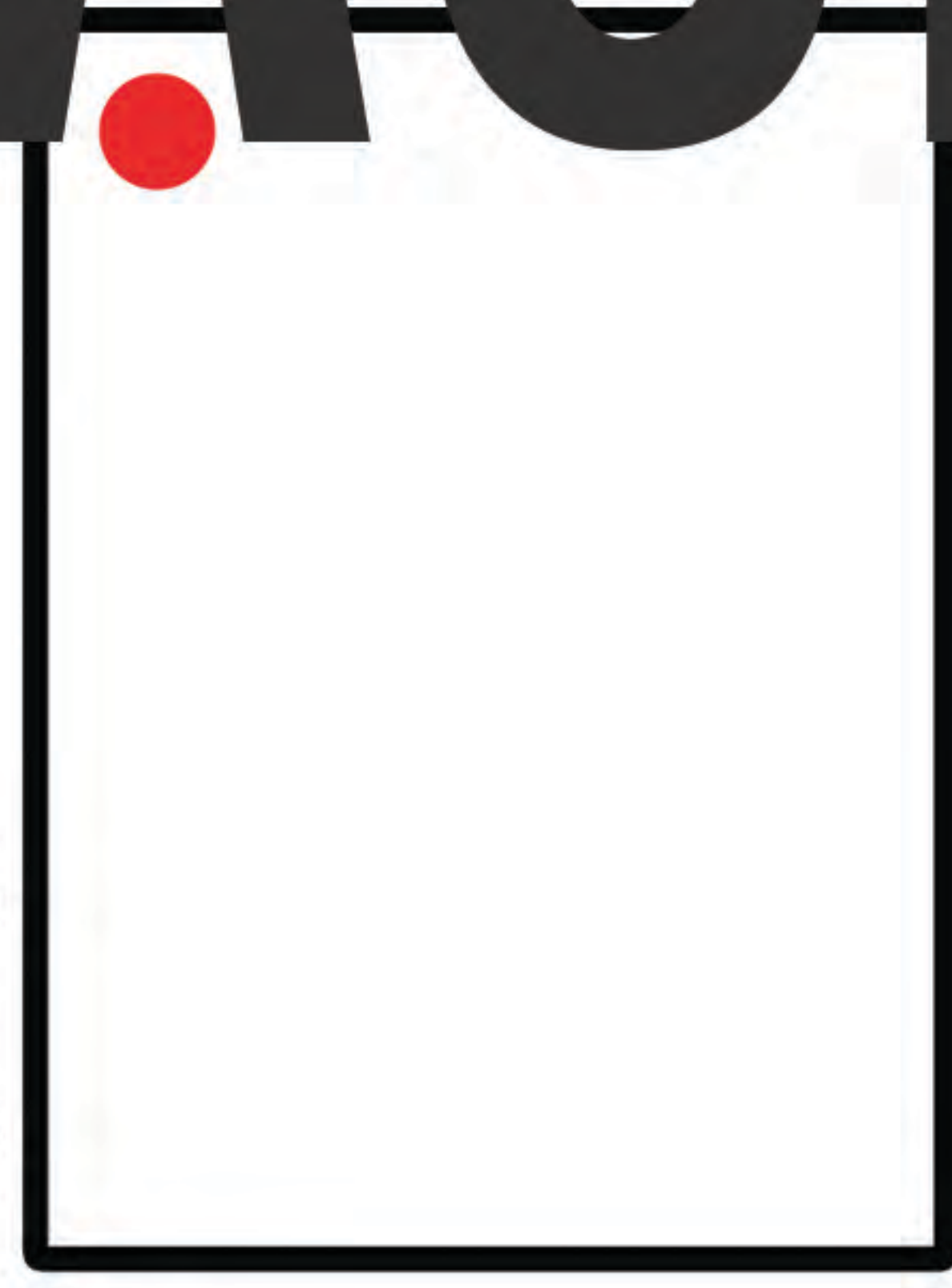


# EMPHASIS + FLOW

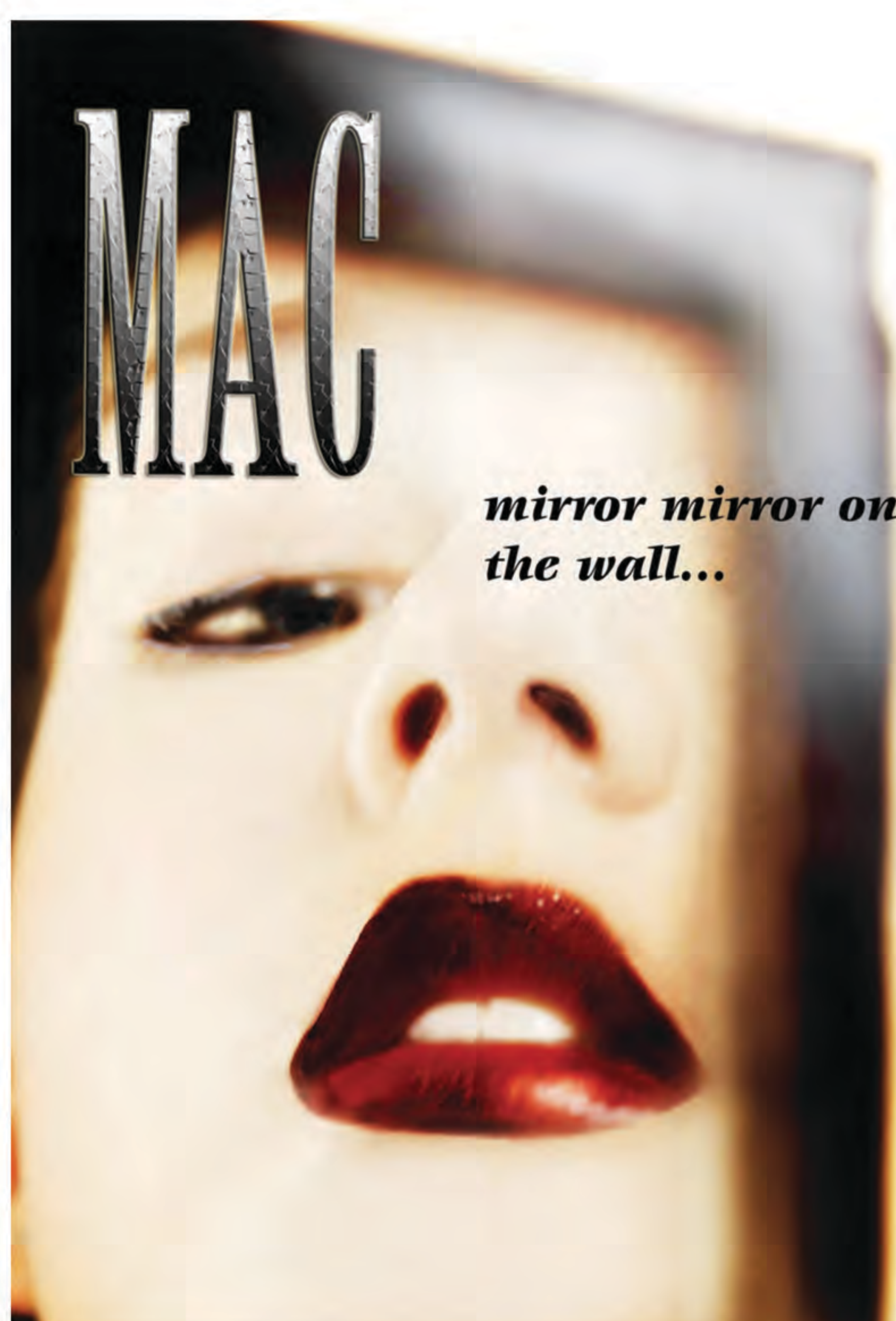


Emphasis is the focus of attention in a composition. A design typically has a flow starting with the first item to look at, the focal point, followed by what the viewer should see second, third, and so on.

**GALLERY NIGHT**  
**Submissions due: April 20th, 2007**  
**Open to all students grade 8-12**  
 Forms/details available in rooms 208 and 428  
 Digital submissions to Mr. Bulger  
 Sketches and Painting to Mrs. Gavel  
**Maximum three submissions per student**

- paintings
- prints
- sketches
- photos
- videos
- animations

**Gallery Night**  
 Argyle Secondary School  
 December 7 - 9  
 6:00 - 9:00 PM  
 Giclee/Archival Prints for sale (Cheque or Cash).  
 Proceeds to support Argyle Visual & Cultural Arts and North Shore Christmas Bureau.  
 Library/Foyer  
 1131 Frederick Rd., North Vancouver 604 903 3300 (ext. 291)



Posters and advertisements are usually good examples of emphasis and flow. In the above cases, it is crucial for the designer to inform

>>>According to what is emphasized most, what do you think is the most important piece of information in the example on the bottom left?